



*Achievement Rewards for College Scientists*

ARCS FOUNDATION SEATTLE CHAPTER'S

# Impact Report

2025

Aeronautics · Animal Science · Astronomy · Bio  
· Bioengineering · Biology · Chemistry · Comput  
er Science · Crops & Soils · Ecology · Engineering  
Entomology · Environmental Science · Epidemiolog  
y · Fisheries · Forestry · Genetics · Math · Medicine  
Neuroscience · Nursing · Oceanography · Pathology  
· Pharmacy · Physics · Plant Science · Space · Speed  
Speech & Hearing · Statistics · Aeronautics · Animal Sci



Patrick Monreal, Oceanography  
University of Washington  
Fairway Fund ARCS Scholar (8th)



# ARCS Foundation

SEATTLE CHAPTER



“ARCS Seattle Chapter’s support of science research at the UW and WSU helps fuel innovation that can lead to life-saving medical breakthroughs and transformative technologies. Our ecosystem at the crossroads of tech, healthcare, and academia makes our universities powerhouses for interdisciplinary research with real-world impact. Now more than ever, our support of the next generation of scientists is a crucial investment in a smarter, healthier, and more sustainable future for everyone.”

**MARGARET BREEN**

President, ARCS Foundation Seattle Chapter

## Our Mission

---

ARCS Foundation advances science and technology in the United States by providing financial awards to academically outstanding U.S. citizens studying to complete degrees in science, engineering, and medical research.

## Leadership

---

### 2025-2026 BOARD OF DIRECTORS

<b>President</b>	Margaret Breen
<b>President-Elect</b>	Missy Zumwalt
<b>Advisors At-Large</b>	Jenny Wyatt
	Margaret Niver McGann
<b>Corporate Secretary</b>	Elizabeth Roberts
<b>VP Development</b>	Judy Rogers
	Rhea Coler
<b>VP Finance</b>	Sarah Dunnam
	Lynne Langseth
<b>VP Membership</b>	Betsy Maurer
	Kristina Grey
<b>VP Programs</b>	Patricia Keegan
<b>VP University Relations</b>	Lyndi Tucker-Taylor
	Janis Mercker
<b>Dir. Long-Range Planning</b>	Laura Bailey
<b>Director Nominations</b>	Amy Rudolf
<b>National Liaison</b>	Kathleen Simpson

# Our Partners in Advancing Science



**ROBERT J. JONES**

President, University Of Washington

**Dr. Robert J. Jones took office as the 34th president of the University of Washington on August 1, 2025.**

He holds a faculty appointment in the Department of Biology in the College of Arts and Sciences. Prior to joining the UW, Jones served for nine years as the 10th chancellor of the University of Illinois Urbana-Champaign, the state's flagship, land-grant university. He is the current chair of the Board of Directors for the Association of American Universities (AAU), and he chairs the Big Ten Council of Presidents and Chancellors. At Illinois, he led the university in establishing a new vision of the land-grant university

for the 21st century, while honoring the institution's long history of achievement. A Georgia native, Jones earned a bachelor's degree in agronomy from Fort Valley State College, a master's degree in crop physiology from the University of Georgia, and a doctorate in crop physiology from the University of Missouri, Columbia. His academic career began as a faculty member at the University of Minnesota where he spent more than three decades as an internationally respected authority on plant physiology. Jones is married to Dr. Lynn Hassan Jones, MD, a muscular skeletal diagnostic radiologist. Together they have five children and a growing number of grandchildren. ■



**ELIZABETH CANTWELL**

President, Washington State University

**Dr. Elizabeth Cantwell became Washington State University's 12th president on April 1, 2025, bringing extensive experience in research leadership.**

Before joining WSU, she served as president of Utah State University, a space and land-grant R1 institution, where she managed a \$1.3 billion annual operating budget, successfully led a redesign of the academic structure, and increased annual research expenditures. Prior to that time, President Cantwell held senior leadership positions at the University of Arizona and Arizona State University, where she significantly expanded their research

enterprises. Her distinguished career also includes extensive service in U.S. national security, with leadership roles at several national laboratories. In addition to holding degrees from Wharton, UC Berkeley, and the University of Chicago, President Cantwell is a fellow of the American Association for the Advancement of Science, and a staunch advocate for STEM education and research in preparing graduates to innovate in a rapidly evolving world. ■





**\$24.8M**

Fellowships  
Awarded  
Since 1978



**1650+**

ARCS Scholars  
Served



**\$19.6M**

ARCS Endowments



**53**

University  
Departments  
Supported



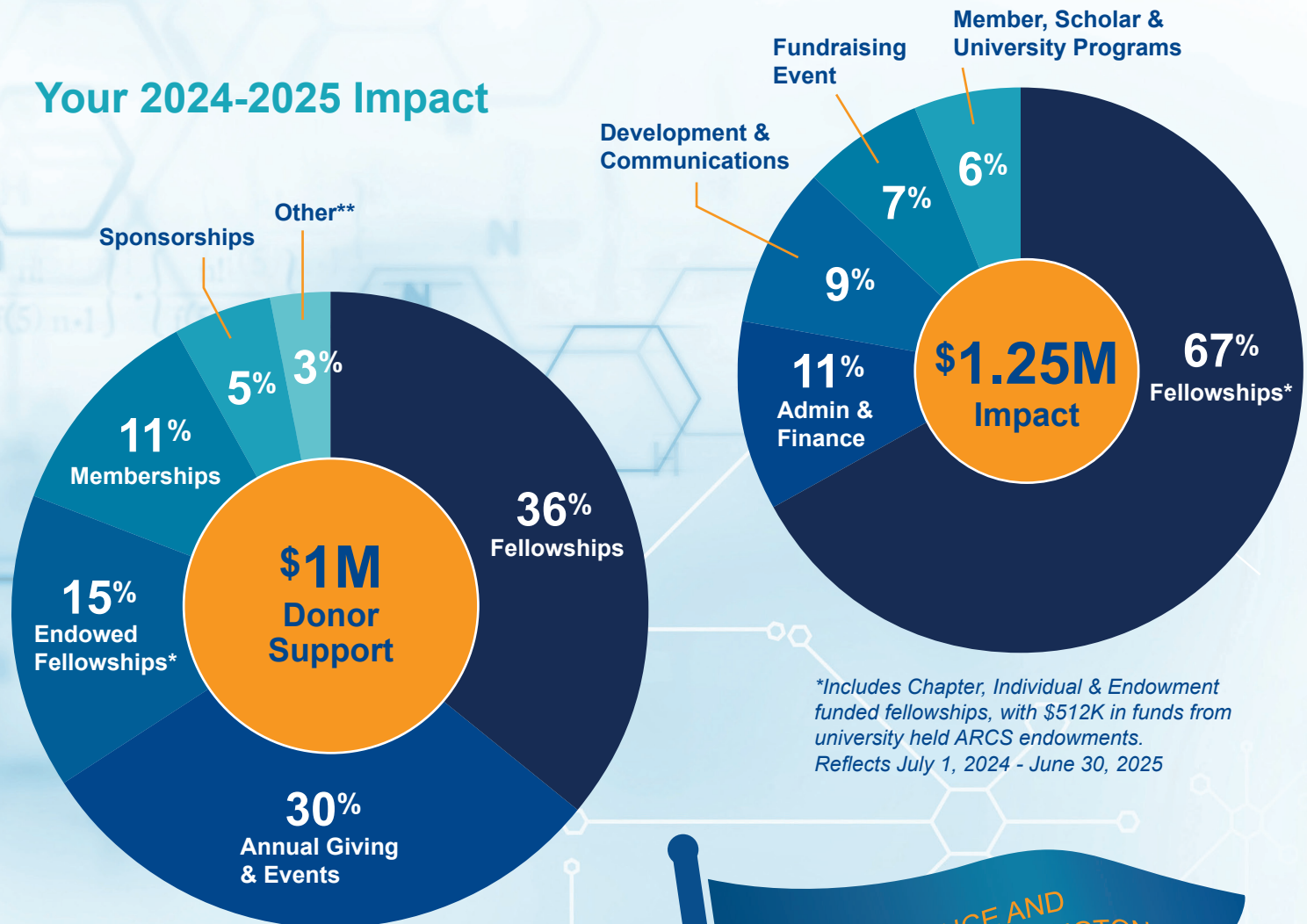
**\$837K**

ARCS Fellowships  
awarded in 24-25

# Investing in Science

NOW MORE THAN EVER...

## Your 2024-2025 Impact



IGNITING SCIENCE AND  
INNOVATION IN WASHINGTON





*UW AISES First Nations Launch team with ARCS Scholar Colin Marquis (far right)*

“Doing science is far more difficult now than at any time in the past 50 years. It is so important to have ARCS Foundation at this moment, both for the money for student support and for the message it sends to young investigators.”

**MARY-CLAIRE KING, PHD**

Associate Director, MSTP Program  
Professor, UW School of Medicine  
National Medal of Science Award 2016  
ARCS Endowment Donor



*Rui Costa with ARCS Scholars at the 2024 Night to Ignite Science at the Amazon Meeting Center.*



# Ways to Give

**Advance ARCS Mission**  
with a gift of any size

**Support an ARCS Scholar**  
with a gift of \$22,500

**Support Scholars in Perpetuity**  
with an ARCS Endowment of \$200,000+

**Consider Corporate Partnerships**  
ranging from \$2,500-\$25,000

**Leave a Legacy**  
with a Planned or Estate Gift



[www.seattle.arcsfoundation.org](http://www.seattle.arcsfoundation.org)  
[information@seattlearcsfoundation.org](mailto:information@seattlearcsfoundation.org)  
Tax ID 91-1042292



# University of Washington

**“Scientific breakthroughs can take generations. Year after year, new graduate students contribute the fresh perspectives and curiosity needed to solve the most intractable problems — and to keep science advancing. With support from ARCS Foundation Seattle Chapter, generations of UW graduate students have approached society’s greatest challenges with confidence and hope as they discover and accelerate solutions that make the world healthier for us all.”**

## **TRICIA R. SERIO**

Provost and Executive Vice President  
for Academic Affairs  
Professor, Biochemistry  
University of Washington



## **DAVID BAKER, PhD**

2024 Nobel Laureate  
HHMI Investigator  
Professor, Biochemistry  
Director of the Institute for Protein Design  
UW School of Medicine

**Proteins have evolved over eons to solve life’s most complex challenges, from fighting infections to harnessing sunlight.**

The goal of the UW Institute for Protein Design (IPD) is to create innovative proteins to help solve current challenges across medicine, technology, and sustainability. Since its founding in 2012, the IPD has pioneered major scientific advances, including the first computationally designed vaccine, powerful new AI tools for scientific research, and a growing portfolio of spinout biotechnology companies.

In recognition of his groundbreaking work in computational protein design, Dr. David Baker, Director of the IPD, was awarded the 2024 Nobel Prize in Chemistry. The Baker lab (which includes several current and former ARCS Scholars) has created a wide array of custom proteins that act as medicines, smart materials, and nanoscale sensors.

“ARCS provides critical support to our trainees,” says Dr. Baker. “Its financial awards and strong community support help us attract some of the country’s brightest young scientists — the very people building the tools that are transforming how we understand and improve the molecular world.” ■

***David Baker with colleagues in Stockholm, Sweden to receive the Nobel Prize.***

*Photo credit: Jens Reiterer*





## KIRSTEN THOMPSON

MD PhD in Molecular & Cellular Biology  
University of Washington  
2022-2025 Washington Research  
Foundation ARCS Scholar (132nd)



### **Cancer immunotherapies, including monoclonal antibodies and small-molecule inhibitors, target proteins that control how cancer cells grow, divide, and spread.**

These cutting-edge therapies, while effective at finding and destroying cancer cells, are not without toxic side effects. Third-year ARCS Scholar, Kirsten Thompson, aims to address this through her research at the UW Institute for Protein Design (IPD).

Kirsten's research focuses on designing immunotherapies to redirect cancer-killing T cells that target diseased cells, while sparing healthy ones. "My goal is to design more tumor-specific therapies that reduce toxic side effects and improve outcomes for cancer patients. We hope this approach

may target a wider range of tumor types — including solid tumors and disseminated tumors cells that can play a role in metastasis."

Kirsten is deeply grateful to be conducting her research at the IPD. "The collaborative spirit within the lab is extraordinary, and the breadth of external collaborations has driven many new research directions. The IPD offers unparalleled opportunities to design novel therapies across a broad range of diseases." She adds, "ARCS helped me feel welcomed into a vibrant research community in Washington. It's provided me with the rare opportunity to connect with and be inspired by graduate students across many disciplines—people I never would have met otherwise." ■

*ARCS Seattle Chapter supports  
Scholars in the following  
departments and schools*

## UW Departments

### **College of Arts & Sciences**

Applied Mathematics  
Astronomy  
Biology  
Chemistry  
Mathematics  
Physics  
Speech & Hearing Sciences  
Statistics

### **College of Engineering**

Aeronautics & Astronautics  
Bioengineering (Jointly with  
School of Medicine)  
Chemical Engineering  
Civil & Environmental Engineering  
Computer Science & Engineering  
Electrical & Computer Engineering  
Industrial Engineering  
Materials Science & Engineering  
Mechanical Engineering

### **College of the Environment**

Aquatic & Fishery Sciences  
Atmospheric Sciences  
Earth & Space Sciences  
Environmental & Forest Sciences  
Oceanography  
Quantitative Ecology & Resource  
Management (QERM)

### **Graduate School (Interdisciplinary)**

Molecular & Cellular Biology  
Neuroscience



### **School of Dentistry**

Department of Oral Health  
Sciences (includes DDS/PhD  
and PhD degree programs)

### **School of Medicine**

Bioengineering (Jointly with  
School of Medicine)  
Genome Sciences  
Medical Scientist Training  
Program (MD/PhD)  
Microbiology

### **School of Nursing**

Nursing Sciences

### **School of Pharmacy**

Health Economics and  
Outcomes Research  
Medicinal Chemistry  
Pharmaceutics

### **School of Public Health**

Biostatistics  
Environmental & Occupational  
Health Sciences  
Epidemiology  
Institute for Public Health  
Genetics Pathobiology

# Washington State University

**“Graduate students are essential to the life of a university, bringing energy, innovation, and ground-breaking research that enrich the intellectual vibrancy of campus life. Their work drives the discovery at the core of WSU’s research mission, while also strengthening its teaching and service missions. Through its generous support, ARCS Foundation Seattle Chapter provides resources that empower these future scientists to pursue bold ideas, advance knowledge, and shape lasting solutions that will benefit society for generations to come.”**

## **TAMMY D. BARRY**

Dean of the Graduate School  
Vice Provost for Graduate Education  
Washington State University



## **JON OATLEY, PhD**

Associate Dean  
College of Veterinary Medicine  
Regents Professor, School of Molecular  
Biosciences, Washington State University

**“The experience of my own ARCS Fellowship (2001 to 2004) offered me opportunities beyond my scientific pursuits,” says Dr. Jon Oatley, Associate Dean at WSU’s College of Veterinary Medicine.**

“Meeting with donors helped me to practice distilling complex scientific principles so I could communicate them to a general audience – a skill that I still use today. Honing that experience early on, through ARCS, was imprinting. It’s the same for ARCS scholars today: The forum to develop their narratives is invaluable.”

Dr. Oatley continues, “The market for top-tier scientific talent is a competitive one. ARCS Fellowships are a powerful recruitment tool, offered to incentivize promising applicants. ARCS gives us a real advantage, increasing the chance that enrollment decisions go our way.”

WSU’s veterinary science departments are nationally recognized for their focus on reproductive health, infectious diseases, and innovations that benefit both animal and human health. “ARCS scholars are expected to rise to the challenge,” says Dr. Oatley. “And with strong mentorship, resources and infrastructure, that high bar becomes a launchpad.” ■

***Dr. Jon Oatley in the WSU Molecular Biosciences lab with ARCS Members.***





## TAYDIN MACON

Entomology  
Washington State University  
Zevenbergen Capital Investments  
2023-2026 ARCS Scholar (35th)



**“I chose entomology because of my fascination with the natural world,” says second-year ARCS Fellow Taydin Macon.**

“Honey bees are critical organisms to study—foundational to our food system.” In the United States, 80% of all crops requiring pollination are pollinated by honey bees. In Washington State, blueberries attract special attention among commercial beekeepers – as our state ranks among the leading blueberry producers globally.

As part of the Hopkins Lab and in collaboration with WSU’s Honey Bees and Pollinators Program, Taydin Macon is part of a two-year study involving over 1,000 honey bee colonies. The research aims to investigate whether there is a link

between blueberry pollination and a prevalent bacterial disease called European Foulbrood; a disease that sickens honey bee larvae and affects the efficacy of the colony’s pollination. Research findings will



***Taydin working with a hive in WSU’s Honey bee and Pollinators Program.***

help commercial beekeepers make more informed decisions when sending colonies to blueberry growers.

Inspired by the legacy of research that’s come out of his lab—Taydin adds, “ARCS played a key role in his school choice. The Fellowship—along with the community of ARCS scholars—helped me feel more confident and grounded.” He’s also grateful for opportunities to engage with donors. “It’s one thing to receive the scholarship,” he comments, “and another to meet the people making it possible.” ■



*ARCS Seattle Chapter supports Scholars in the following departments and schools*

## WSU Departments

### College of Agriculture, Human & Natural Resources Science

Animal Sciences  
Crop and Soil Sciences  
Entomology  
Molecular Plant Sciences  
Plant Pathology

### College of Arts & Sciences

Chemistry

### Voiland College of Engineering & Architecture

Chemical Engineering  
and Bioengineering  
Electrical Engineering and  
Computer Science

### College of Veterinary Medicine

Global Health  
Molecular Biosciences  
Integrative Physiology  
and Neuroscience  
Veterinary Clinical Sciences  
Veterinary Microbiology  
and Pathology



# ARCS Seattle is grateful to the following donors for their generosity

## Endowed Fellowships

**Gifts of up to \$200,000+ given to the UW or WSU to support ARCS Scholars in perpetuity.**

Loch Anderson & Allyn Perkins (9<sup>th</sup>)  
Loch Anderson & Allyn Perkins, Second (7<sup>th</sup>)  
Aven Foundation ARCS (7<sup>th</sup>)  
Rosa Ayer (11<sup>th</sup> & 12<sup>th</sup>)  
Becky & Jack Benaroya (18<sup>th</sup> & 19<sup>th</sup>)  
Bobbie & Richard Berkowitz in Nursing Science (2<sup>nd</sup>)  
Nicole A. Board (6<sup>th</sup>)  
Betty Bottler - Oceanus (9<sup>th</sup>)  
Alicia and Jeff Carnevali in Honor of Sophia R. Carnevali (3<sup>rd</sup>)  
Alicia & Jeff Carnevali in Oceanography (3<sup>rd</sup>)  
Doris L. Carnevali in Nursing (3<sup>rd</sup>)  
Lynn Manley & Lex Lindsey - Chisholm Foundation Second (17<sup>th</sup>)  
Lynn Manley & Lex Lindsey - Chisholm Foundation (15<sup>th</sup> & 16<sup>th</sup>)  
Elizabeth Rudolf - Virginia M. Dickenson Memorial (10<sup>th</sup>)  
Rick & Jacque Doane (7<sup>th</sup>)  
Emer Dooley & Rob Short (6<sup>th</sup>)  
Jeff Eby/WRF  
Micki E. and Robert J. Flowers (11<sup>th</sup>)  
Jeff & Jana Foushée Family UW (5<sup>th</sup> & 6<sup>th</sup>)  
Jeff & Jana Foushée WSU (7<sup>th</sup>)  
Cindy & Stan Freimuth (1<sup>st</sup>)  
Margery S. Friedlander (8<sup>th</sup>)  
Bill & Melinda Gates Foundation (5<sup>th</sup>)  
Carmen & Carver Gayton  
William & Ruth Gerberding (13<sup>th</sup>)  
Vicki & Gary Glant (11<sup>th</sup>)  
Vicki J. & Thomas W. Griffin in Honor of Paige & Griffin Thoreson (9<sup>th</sup>)  
Gladys Harrington in honor of Eve Alvord (27<sup>th</sup> & 28<sup>th</sup>)  
Ronald and Darlene Howell UW (2<sup>nd</sup>)  
Mark A. Jones (6<sup>th</sup>)  
Kristin N. Kenefick (3<sup>rd</sup>)  
Kristin N. Kenefick & Nancy P. Norberg (4<sup>th</sup> & 5<sup>th</sup>)  
K. J. "Gus" and Connie Kravas (1<sup>st</sup>)  
Lisa & Mike Losh (8<sup>th</sup>)  
Margaret Allison, Anne Simpson & Charlie Connier - MAC Consortium (9<sup>th</sup>)  
Keith & Mary Kay McCaw Family Foundation (23<sup>rd</sup>)  
Keith & Mary Kay McCaw Family Foundation (19<sup>th</sup>-22<sup>nd</sup>, 124<sup>th</sup>)  
Pamela H. & Donald W. Mitchell in Nursing Science (8<sup>th</sup> & 9<sup>th</sup>)  
Pamela H. & Donald W. Mitchell Second in Nursing Science  
Joanne & Bruce Montgomery (12<sup>th</sup> & 13<sup>th</sup>)

Joanne & Bruce Montgomery in Honor of the American Lung Association (5<sup>th</sup> & 6<sup>th</sup>)  
Nancy P. & Douglas E. Norberg (6<sup>th</sup>)  
Susan & William Potts (5<sup>th</sup>)  
Mary-Claire King with ARCS Foundation - Oliver W. Press (3<sup>rd</sup>)  
Jim & Trish Rogers ARCS Endowed Fellowship (8<sup>th</sup>)  
Candice Rosenberg Peterson (17<sup>th</sup> & 18<sup>th</sup>)  
Virginia M. Dickenson Memorial (9<sup>th</sup>)  
Dorothy Lewis Simpson (19<sup>th</sup> & 20<sup>th</sup>)  
Carlyn & George Steiner (12<sup>th</sup> & 13<sup>th</sup>)  
Charles & Delphine Stevens Family Foundation (3<sup>rd</sup>)  
Althea Stroum (34<sup>th</sup>-37<sup>th</sup>)  
Susan Swindells - Fairway Fund (9<sup>th</sup>)  
Julie Tall (8<sup>th</sup>)  
Lyndi & Robert Taylor  
Lynn & Mikal Thomsen (19<sup>th</sup>)  
Camille & Jim Uhler (17<sup>th</sup> & 19<sup>th</sup>)  
Walker Family (14<sup>th</sup> & 15<sup>th</sup>)  
Washington Research Foundation UW (135<sup>th</sup>-139<sup>th</sup>, 142<sup>nd</sup> & 143<sup>rd</sup>)  
Washington Research Foundation WSU (134<sup>th</sup>, 140<sup>th</sup>, 141<sup>st</sup>, 144<sup>th</sup>, 145<sup>th</sup>)  
Michael & Marti Young (3<sup>rd</sup>)  
Nancy & John Zevenbergen (37<sup>th</sup> & 40<sup>th</sup>)  
John W. and Elaine A. Zevenbergen, Sr. (36<sup>th</sup> & 41<sup>st</sup>)

## Fellowships

**Gifts of \$22,500 given over three years: 2023, 2024, and 2025.**

**NOTE: Shared fellowship donors are listed together.**

Eve & Chap Alvord (24<sup>th</sup>-26<sup>th</sup>)  
Eve and Chap Alvord (26<sup>th</sup> & 29<sup>th</sup>)  
Karyl and Elias Alvord (6<sup>th</sup>)  
ARCS Light in honor of Kitti Lile  
ARCS Light in honor of Molly Pengra  
ARCS New Member Class of 2023: Betsy Maurer, Emily Carrington, Vanessa Laughlin, and Alice Gautsch Foreman  
ARCS Seattle Chapter in honor of Lyndi and Bob Taylor  
ARCS Seattle Chapter in honor of PACCAR Inc.  
Patty and Jimmy Barrier - Ross Barrier (8<sup>th</sup>)  
Karen Cameron in honor of Kevin Cameron (2<sup>nd</sup>)  
Sandra & Kent Carlson (6<sup>th</sup>)  
Geri and Chris Carlson  
Chisholm Foundation (15<sup>th</sup>)  
Daniel Family  
Lauren Dudley



**ARCS Scholar Jeremiah Sims with David Baker**

Mary Dunnam & Sarah Dunnam (7<sup>th</sup>)  
Mike & Nancy Eck with Jim & Trish Rogers  
Alice Gautsch Foreman (1<sup>st</sup>) with Missy and Kurt Zumwalt (2<sup>nd</sup>)  
Kathy Fraser (4<sup>th</sup>) with Sally and David Wright (4<sup>th</sup>)  
Alden Garrett & Charles Eriksen (2<sup>nd</sup>)  
Cassa Hanon (2<sup>nd</sup>) with ARCS Foundation  
Allison & Steve Harr (3<sup>rd</sup>)  
Andrea Ellison Hess (6<sup>th</sup>)  
Marie K. Huwe (1<sup>st</sup>) with Lindsay F. Eberts & Patti Paxton-Eberts (3<sup>rd</sup>)  
Melissa & Eric Jones  
Trish Keegan & Tom Lennon (4<sup>th</sup>) - Terry Keegan Memorial  
Polly & Andrew Kenefick (2<sup>nd</sup>)  
Mary & Peter Kerr (2<sup>nd</sup>) with Gail & Larry Ransom (3<sup>rd</sup>)  
Alida & Chris Latham (4<sup>th</sup>)  
ARCS Light in honor of Marcia Lewis  
Betsy Maurer and Andrew Schulman (2<sup>nd</sup>)  
Janet & Roderick McNae (3<sup>rd</sup>) UW  
Janet & Roderick McNae (2<sup>nd</sup>) WSU  
Nancy Mee & Dennis Evans (5<sup>th</sup>)  
Catherine Mee (6<sup>th</sup>)  
Janis Mercker  
Harriett & John Morton (5<sup>th</sup>)  
Tina & Karl Neiders (4<sup>th</sup>)  
Eleanor & Charles Nolan (6<sup>th</sup>)  
Pendleton & Elisabeth Carey Miller Foundation (9<sup>th</sup>)  
Vijay Raghavan & Bairavi Vijay  
Judy Rogers (3<sup>rd</sup>) - Floyd Rogers Memorial  
ARCS Light in honor of Amy Rudolf  
Washington Friends of Farms and Forests with ARCS  
WSU Pullman Chancellor  
Jenny and Scott Wyatt (4<sup>th</sup>) with Debbi and John Wilson (4<sup>th</sup>)  
Zevenbergen Capital Investments (35<sup>th</sup> & 38<sup>th</sup>-39<sup>th</sup>)



# Individual Contributors

**Gifts between July 1, 2024 and June 30, 2025**

**NOTE: Excludes Fellowship & Endowment donors listed on page 8**

## • \$10,001-\$25,000

Amazon  
Anonymous  
Trial and Error Productions  
University of Washington  
Washington Research Foundation  
Washington State University  
Zevenbergen Capital Investments

## • \$2,501-\$10,000

Megan Anderson  
Laura Bailey  
Christensen O'Connor Johnson Kindness  
Fred Hutchinson Cancer Center  
Albert and Kathryn Greenberg  
Cheryl and David Hadley  
In memory of Jana Jansen  
Beverly and Donald Jefferson  
Barbara and Judd Kirk  
Laird Norton Wetherby  
Courtney and Todd Laughery  
Vanessa and Andrew Laughlin  
Kitti Lile  
Diane and Kirby McDonald  
Marcia McGreevy Lewis  
Sally and John Morbeck  
Lynn and Steve Mowe  
Erin Moyer and Jason Barber  
Connie Niva  
Margaret Niver McGann and Chris McGann  
Molly Pengra



**ARCS Scholar Sydney Floryanzia (center) with Elizabeth Nance and Tom Daniel**

Prescription Vinyards and Lloyd Cellars  
Elizabeth and Jonathan Roberts / R Prime  
Spencer Hurst and Jenny Rogers Hurst  
Luciana Simoncini and Todd Scheuer  
Kathleen and Brooks Simpson  
Andy and JoAnn Stergachis  
Andrea Thoreson  
Tinte Cellars / Teresa Spellman Gamble  
Valerie Voss and John Houlihan  
Alice and Ernest Weymuller  
Wyman Youth Trust



**ARCS Scholars Aaleyah Lewis and Caroline Duncombe**

## • \$1,001-\$2,500

Alicia and John Alberg  
Mary Alberg  
Allen Institute for Brain Science  
Julie Barbo  
Karen and David Beaudry  
Jane and Watson Blair  
Ann and Bruce Blume  
Toby Bradshaw  
Margaret Breen and Stewart Landefeld  
Zan Brookshire and Bert Green  
Rhea and Clark Coler  
Tom Daniel  
Brooke and Bertrand deBoutray  
Foushée and Associates  
Doris Gaudette  
Krissy and Mark Grey  
Lyn and Gerald Grinstein  
Sheryl Gudaitis  
Betz Halloran  
Nate and Leslie Miles  
Jane and James Hawkanson  
Deanna Hearn  
Susan Jobs  
Christy Jones and Robert Lilleness  
Will and Beth Ketcham  
Lynne and Norman Langseth  
Jud Marquardt  
Marcus Mason

Ann McCutchan  
Laura and David Midgley  
Nicole and Paul Neutz  
Lee Peterson  
Jill Ruckelshaus  
Amy and Matt Rudolf  
MA and Bruce Sangeorzan  
Ginger Schmidt  
Lisa Sfera and Garth Olson  
Christine Simpson Brent  
Lesa Sroufe and Matt Barnes  
Yens Steller  
Beth Toomey  
USI Insurance Services  
UW Medicine  
Iris and Ted Wagner  
Jennifer West Higgins and John Higgins

## • \$501-\$1,000

David and Virginia Broudy  
Jennie Carter  
Krista and Jim Ferguson  
Lynne Graybeal and Scott Harron  
Kate and Adam Harris  
Chapin Henry  
Betsy Hill  
Carolyn Hutter  
Erika Keating  
John Kirkpatrick  
Linda Krebs  
Nona Larson  
Sherry and Devin Lehmann  
Kristi Mathisen  
Marcia Mattheaei  
Marcia and Clyde Monma  
Karen Nieman  
Molly Philopant  
Elizabeth Post  
Ann and Jerry Powell  
Mary and Paul Saad  
Linda and Paul Suzman  
Ginny Thomas  
Hilaire Thompson  
Rick Ungersma

## • \$251-\$500

Nancy & Craig Abramson  
Cristi Aigner  
Kim Armstrong  
Susan & Charles Armstrong  
Megan Asche  
Trudy Baldwin  
Maddy Brindle  
Gabriela Chavarria  
Tina Cobb  
Marjorie Danz  
Marlene & John Durbin  
Dona Golden  
Betz Halloran  
Kay Hanafin  
Ann & Peter Hanson  
Chapin Henry  
Elizabeth Hill  
Cynthia Huffman

Mame Kell  
Linda Krebs  
Mandy Landa  
Shannon Langer  
Melinda LeClercq  
Sherry Lehmann  
Dave & Helen Mandley  
Jud Marquardt  
Kristi Mathisen  
Colleen Mills  
Shelley Morrison  
Susan Moss  
Joan Myers  
Mary Nelp  
Connie Niva  
Carrie Olesen  
Heather O'Mahony  
Steve Perlmutter  
Elizabeth Post  
Barbara Potter Jaech  
Paula Rattigan  
Sue Raymond  
Sara Robertson  
Palmer Robinson  
Jeanie & Bill Rosen  
Kathryn Ross & Tim Schmuckal  
Linda Ruggles  
Robert Shaw  
Kelley Sowards  
Olivia Sroufe  
Hope Stroble  
Paula Szkody & Don Brownlee  
Anne & Wayne Wager  
Diane Warshal  
Jackie Weeks  
Kathleen Whitson  
Carla Wigen



**ARCS Scholar Brayden Young (center) with Scott and Jenny Wyatt**



**Nancy Zevenbergen with ARCS Scholar Siegan McKellar**

## • Up to \$250

Megumi Azekawa  
Emily Bayne Antezana  
Tomitha Blake  
Patricia Bosman  
Rick Bosman  
Nancy Carr  
Diane Cook and G. Zyskowski  
Diane Curtis  
Amy Davis  
Thomas Dodd  
Ryan Durkan  
Tammy Dwight  
Thomas Edwards and Zimmie Caner  
Bob Gilb  
Mary Gresch  
Andrea Hackman  
Nancy Hafemann  
Ann and Peter Hanson  
Bryan Hester  
Gretchen Hund  
Marilyn Jones  
Carole Kitchell  
Michael Krebs  
Tom Leschine  
Maribeth Lopit  
John Macklin  
Carrie Miller  
Shelley Morrison  
Steve Perlmutter  
Colleen Sloan  
Jennifer Sonney  
Olivia Sroufe  
Virginia and Jeanne Stellar  
Paula Szkody and Don Brownlee  
Pete Toomey  
John Tranquada  
Vicki Voskuil  
Allison Webel  
Frank and Joan Williamson  
Colleen and George Willoughby

**ARCS Foundation Seattle Chapter is grateful  
to our 2025-2026 Partners for their generous support**

**PLATINUM SPONSORS**



**GOLD SPONSORS**



**SILVER SPONSORS**



**BRONZE SPONSORS**



# Get in Touch



[information@seattlearcsfoundation.org](mailto:information@seattlearcsfoundation.org)



[www.seattle.arcsfoundation.org](http://www.seattle.arcsfoundation.org)



@arcsseattle



ARCS Foundation Seattle Chapter  
Private Mail Box 429  
4616 25th Ave NE  
Seattle, WA 98105

ARCS Foundation Seattle Chapter  
(Achievement Rewards for College Scientists)  
is a Washington state registered 501 (c) 3  
non-profit organization, Tax ID # 91-1042292.