



NASEEHA CARDWELL

Chemical Engineering, Washington State University
Washington Research Foundation (122nd)
ARCS Scholar



Achievement Rewards for College Scientists
ARCS® Foundation Seattle Chapter

ARCS SCHOLAR BIO BOOKLET

2022
2023

SEATTLE
CHAPTER
SCHOLARS



2022-2023

ARCS Foundation Seattle Chapter Scholars

Our Mission:

ARCS® Foundation advances science and technology in the United States by providing financial awards to academically outstanding U.S. citizens studying to complete degrees in science, engineering, and medical research.

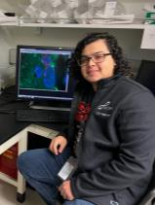
*****For ARCS Foundation Use Only*****

A Washington nonprofit organization: Tax ID 91-1042292

Recipient Schools:

University of Washington and Washington State University

Mark Andrade – MD/PhD - Molecular & Cellular Biology
University of Washington
Washington Research Foundation (131st)



Mark received a bachelor's degree from Emory University (Biology and Mathematics). From a very young age, he was fascinated by regenerative medicine, stem cell technologies, and how they have impacted healthcare. His motivation for pursuing an MD/PhD is to continue to integrate foundational knowledge from medicine practice into quality research with translational implications. Currently, Mark works in Dr. Vincenzo Cirulli's lab where they explore pancreatic beta cells and how to enhance their proliferative capacity for cell therapies in type I and II diabetes along with other stem cell technologies. His current research and medical experiences have provided him opportunities to explore various avenues for regenerative medicine to be improved upon and ultimately applied to healthcare. Furthermore, he hopes to continue his activist work with underserved communities to achieve a more ubiquitous healthcare experience. In his free time, Mark enjoys playing his electric guitar, all terrain vehicles, cars, and learning about new computer hardware.

Ky Aryeh – Pharmaceuticals
University of Washington
Krissy & Mark Grey



Ky received a bachelor of science degree in Molecular and Cellular Biology, a bachelor of arts degree in Philosophy (Ethics), and minors in Biochemistry and Persian from the University of Arizona. Over the past six years, she has conducted cancer, addiction, and myotonic dystrophy research. Throughout her professional career, she has gained a wide range of research experiences and technical skills including basic bench work, rodent work, and managing clinical and translational research studies. In her free time, Ky loves to paint, travel, and play the guitar.

Freddy Barragan – *Biostatistics*

University of Washington

Bill & Melinda Gates Foundation ARCS Endowment (4th)



Freddy received her bachelor's degree in Statistics from Macalester College and has been a student researcher in the University of Minnesota's Division of Epidemiology and Clinical Research since June 2020. Her previous research aimed to identify and characterize disparities in pediatric cancer using techniques spanning statistical genetics, genetic epidemiology, and bioinformatics. Inspired by her experiences as a first-generation, low-income, transgender Latina, and her love for Bayesian statistics, she intends to study health disparities for HIV+, non-White, and LGBTQ+ communities using Bayesian spatiotemporal modeling while at UW. Outside of research, she loves making digital art, drinking monster energy drinks, and making spotify playlists of her favorite shoegaze, new wave, and electronic songs.

Emily Beyer – *Nursing Science*

University of Washington

Pamela H. & Donald W. Mitchell ARCS Endowment in Nursing Science (5th)



Emily received a bachelor's degree in Nursing Science from Seattle University in 2019. After graduating, she began working as a nurse in the Psychiatric ICU of Harborview Medical Center. Since starting at Harborview, she has received the Daisy Award and championed the restart of her Unit Practice Counsel. She witnessed first-hand the many ways in which this field could grow and improve. Having developed a passion for research during her BSN program, Emily realized that seeking to better the field of inpatient psychiatry through research was the next step in her career. Through research, she aims to decrease repeated readmission to inpatient psych facilities and improve outcomes for patients struggling with severe mental illness. In her free time Emily enjoys rock climbing, hiking, and singing at her church.

**Shiven Bhardwaj – *Health Economics & Outcomes Research*
*University of Washington***

Candice Rosenberg Peterson ARCS Endowment (16th)



Shiven received a PharmD degree from Philadelphia College of Pharmacy. Since receiving his degree, he has worked in a variety of health care settings, including community pharmacy, hospice clinical consulting, pharmaceutical medical affairs and marketing research, as well as pharmacy benefit manager. Working through these different settings, he has recognized major shortcomings of various health policies relating to pharmaceutical reimbursement and their disjointed nature, which do not serve patients and clinicians well, and often do not demonstrate benefit in outcomes or cost reduction. His interest is in becoming a pharmaceutical health services researcher, spending his time evaluating pharmaceutical policies, and helping explore solutions to improve policies.

**Christina Bjarvin – *Environmental & Forest Sciences*
*University of Washington***

Elizabeth and Johnathan Roberts (3rd)



Christina received a bachelor's degree in Environmental Sciences from Western Washington University in 2019 and finished a master's degree in Environmental and Forest Sciences from the University of Washington in 2022. For her master's thesis, she researched the potential for mass timber wood products to mitigate climate change by storing carbon for long periods of time in buildings, and by lowering the carbon footprint of buildings by replacing concrete and steel. She is excited to continue her research with the CINTRAFOR lab during her PhD program. Her work promotes the use of sustainable, natural materials to construct the spaces people work and live in, bringing nature closer to people, while creating an economic demand for forest growth. In her free time, Christina loves hiking, backpacking, and gardening. She also enjoys teaching skiing in the winter.

Becca Blyn – Pathobiology

University of Washington

Kristin N. Kenefick ARCS Endowment (2nd)



Becca received a bachelor's degree in Molecular Biology from Harvey Mudd College. She has developed strong interests in both infectious diseases and social justice, and she hopes to bring the two together via research on diseases that affect underdeveloped countries and/or underserved populations. She most recently worked in Dr. Danae Schulz's lab at HMC studying the genetic regulation of *Trypanosoma brucei*, the causative agent of the neglected sleeping sickness disease endemic to Sub-Saharan Africa. After earning a PhD, Becca plans to go into the field of science policy, where she hopes to have a positive impact through the development of science-based legislation and guidelines. Outside of the lab, Becca enjoys playing euphonium, figure skating, and meeting dogs.

Cassidy Burke – MD/PhD - Neuroscience

University of Washington

Lisa & Jim Koch



Cassidy received her bachelor's degree from the University of Virginia, with majors in Neuroscience and English. While there, she completed an undergraduate thesis in the Perez-Reyes lab on gene therapy development for temporal lobe epilepsy. Following graduation, she worked as a NIH IRTA studying neuroinflammation in mitochondrial disease, and entered the UW MSTP in 2020. At UW, she is completing a Neuroscience PhD in the Stuber lab, with a focus on using systems neuroscience approaches to study individual differences in vulnerability to developing substance use disorder. She plans to pursue residency in psychiatry after completing medical school, with a goal of combining basic research and clinical work to improve the treatment options available to patients. Cassidy enjoys distance running and reading in her spare time.

**Emily Callen – Health Economics & Outcomes Research
University of Washington**

Vicki & Gary Glant ARCS Endowment (10th)



Emily received a bachelor's degree in Biology from the University of Tulsa and a Master of Public Health from the Johns Hopkins Bloomberg School of Public Health. Her professional career in politics and advocacy, especially in the American South, shaped her motivation to study health economics. While at

Hopkins, she had the opportunity to gain research experience in cost-effectiveness analysis, which cemented her passion for the field. Her research interests include methods for distributional cost effectiveness analysis and health inequality aversion in the United States. She is motivated to bridge research and practice, and envisions a world where decisionmakers are equipped with tools that incorporate the value of positive health equity impacts. Emily loves trading thrillers with her mom, and hiking with her husband, Nick, and their dog, Penelope.

**Caleb Carr – MD/PhD - Genome Sciences
University of Washington**

Lynn Pigott Mowe (4th)



Caleb received bachelor's degrees in Biochemistry and Computer Science from the University of Massachusetts - Amherst. He currently works in Jesse Bloom's Lab which studies the evolution of viruses using a combination of experimental and computational approaches. His current research

experience has given him the opportunity to apply his training in biochemistry and computer science to study how viruses evolve to evade human immunity. In the future, he hopes to complete his medical training in infectious diseases and be a principal investigator researching host-pathogen interactions. In his free time, Caleb enjoys hiking, paddle boarding, and biking.

Hannah Cook – Entomology
Washington State University

Jeff & Jana Foushée Family ARCS Endowment, Second (3rd)



Hannah earned a bachelor's degree in Biological Sciences from the University of Rochester. Growing up in the Great Lakes region, Hannah Cook witnessed ways in which the environment had changed over the span of her lifetime. Now more than ever, she feels it is important to understand the life on earth that surrounds us before it disappears. She is interested in documenting the organisms that have been left under-studied despite their significance in maintaining ecosystems. Her research thus far has involved understanding how insect populations respond to the rapidly changing environment. Hannah plans to continue researching the evolution of bee-plant interactions, which result in the biodiversity we see today. After earning her PhD, she hopes to continue academic research. Fun fact: despite working with wasps for over four years, she has yet to be stung!

Cameron Coyle – Veterinary Microbiology & Pathology
Washington State University

Eve & Chap Alvord (24th)



Cameron Coyle is from Boise, Idaho. She graduated summa cum laude from the College of Idaho with her bachelor's degree in Biology, where she also was a student senator, lead student ambassador, varsity athlete on the women's soccer team, and undergraduate summer research student. During the summers, she researched the effects of xenobiotics, including the pollutant aluminum chloride, on the functions of the phase II detoxification enzyme glutathione S-transferase in signal crayfish. Her interest in immunology and infectious disease stemmed from the podcast, *This Podcast Will Kill You*, where each week, the hosts explore and breakdown different infectious diseases. Cameron holds a particular interest in the relationships between host and pathogen, and vector and pathogen, in vector transmitted diseases. At WSU, she will rotate through three labs that study host-pathogen and vector-pathogen interactions, before selecting her home lab and PI to complete her thesis.

Samantha Dilday – *Entomology*

Washington State University

ARCS Seattle Chapter



Samantha Dilday received a bachelor's degree in Biology from George Mason University. Samantha's current research focuses on the effects that blueberry pollination has on honey bee health. Blueberries are difficult for honey bees to pollinate, because the pollen is acidic and may increase occurrences of foulbrood. Furthermore, the food resources lack key nutrients for honey bees. Samantha's also an artist (scientific illustration), avid reader (favorite author is Terry Pratchett), a gardener and forager, and she has two dogs and a supportive partner whom she loves very much.

Augusta Finzel – *Molecular Plant Sciences*

Washington State University

Pendleton & Elisabeth Carey Miller Foundation (8th)



Augusta Finzel earned her bachelor's degree in Russian and Biology from Lawrence University in Wisconsin. She has always loved the interconnected nature of the natural world and has a wide range of experience in native ecological restoration of prairie, shoreline, and wetland ecosystems of the upper Midwest. She looks forward to expanding her knowledge of how plants, microbes, and fungi interact as part of biogeochemical cycles and their potential in remediating contaminated landscapes. Augusta aims to center her work within an environmental justice framework. She loves hiking and backpacking as well as going to farmers markets, and she enjoys live music.

**Kailie Franco – *Veterinary Microbiology & Pathology*
*Washington State University***

Rick & Jacque Doane ARCS Endowment (6th)



Kailie Franco earned a double bachelor's degrees in Biochemistry/Biophysics and Chemistry from Oregon State University. She is interested in gastroenteric pathogens at least in part because her family has a long history with GI disease, and she wants to elucidate a drug to help treat, not simply manage, GI diseases, such as

Crohn's and IBS. Kailie looks forward to discovering new information about *H. pylori* and *S. enterica* in the Baylink Lab at WSU, where she will work to obtain her PhD in immunology and infectious disease. She loves to spend time with her cat, Orion, and enjoys crocheting and gardening in her free time.

**Anthony Garcia – *Biology*
*University of Washington***

Gladys Harrington in honor of Eve Alvord ARCS Endowment (24th)



Anthony received a bachelor's degree in Plant Biology at the University of Washington. He is fascinated by the ways plants respond to changes in their environment, including the complex mechanisms plants utilize to defend themselves from pests and pathogens. As an undergraduate, Anthony gained

experience studying molecular processes underlying plant defenses against herbivory, which provided him the opportunity to gain deeper insights into the complexity of plant molecular biology. As a graduate student at UW, he hopes to leverage advances in plant molecular biology to contribute to sustainable solutions to improve crop resistance against threats that burden global agriculture. He also aims to engage in science communication and outreach to bring excitement for plants to diverse audiences. In his free time, Anthony enjoys running and visiting bookstores.

Antonio Glenn – *Computer Science & Engineering*
University of Washington
Dooley-Short ARCS Endowment (5th)



Antonio received a bachelor's degree of Engineering in Biomedical Engineering from Vanderbilt University. Originally positioned to attend medical school, Antonio instead elected to attend graduate school after realizing his interests leaned more heavily towards designing and building medical technology. Several computer science and biomedical instrumentation courses piqued his interest in developing medical devices and drove his decision to pursue a career as an engineer instead of a physician. His research interests broadly span medical technology - including devices for monitoring health such as wearables and smart phones. Due to the COVID pandemic, he sees a remarkable opportunity to expand healthcare to more communities by leveraging mobile apps, wearable devices, and the internet. In his free time Antonio enjoys Jiu Jitsu, Muay Thai, reading, and journaling.

Siena Glenn – *Veterinary Microbiology and Pathology*
Washington State University
Mani Barrier (7th)



Siena Glenn earned two bachelor's degrees from Oregon State University in Microbiology and Psychology. She has always loved studying the mechanism of actions, and by attending graduate school, she hopes to continue to feed her curious mind. Siena works at the Baylink Lab, which investigates bacterial chemotaxis and bacterial antioxidant enzymes' patterns. The goal of this research is to target two bacteria, *Helicobacter pylori* and *Salmonella enterica* stomach, linked to stomach cancer and irritable bowel disease. Siena and her cat Suki can't wait to be part of the WSU community!

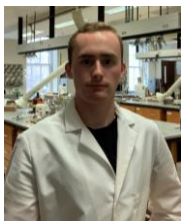
Angela Gonzalez – Environmental & Forest Sciences
University of Washington
Cheryl & David Hadley (4th)



Angela earned her master's degree in Forest Sciences at Colorado State University and her bachelor's degree in Geography with a minor in Evolutionary Biology and Ecology from the University of Colorado. Her past research focused on the impacts of drought and disturbances on forest health and regeneration.

Angela is passionate about montane ecosystems and has done research on tree mortality in subalpine forests, and post-fire regeneration and drought in the lower montane. She is interested in continuing research on climate change and its impacts on forest dynamics during her doctorate studies. She hopes to stay in academia after earning her PhD. In her spare time, you will find her doing fiber arts, wood working, and gardening.

Mathew Heaney – Chemistry
Washington State University
ARCS Seattle Chapter



Mathew Heaney was born and raised in Omaha, Nebraska. During middle school, he was first introduced to the periodic table and chemistry through a book called *The Elements*, and the subject instantly captivated him. The interest led him to earn his bachelor's degree in Chemistry from Southern

Methodist University in Dallas, Texas. Mathew has always held a particular interest in radioactive elements, and coupled with the problems humanity is facing due to climate change, he is pursuing research in nuclear fuel synthesis and properties. Since the field of research cannot be fully explored in the span of a PhD, he hopes to continue at a national laboratory. Ultimately, Mathew hopes to see the results of his research playing a role in averting climate disaster.

Tia Hoisington – *School of Molecular Biosciences*

Washington State University

Zevenbergen Capital Investments (33rd)



Tia Hoisington was born and raised in Green Bay, Wisconsin. She earned her bachelor's degree in Biology and Chemistry at Lakeland University, a small liberal arts college near her hometown. Tia has had a variety of research experiences, with her most recent being in teratology and drug research at Charles River Labs in Mattawan, Michigan. She is interested in researching fertility and hopes to gain a position that allows her to continue working in the field. In her free time, she enjoys being outdoors and reading. Tia also likes exploring new recipes and finding fun things to bake. Fun fact: she has an identical twin.

Joshua Grady Holder – *Aeronautics & Astronautics*

University of Washington

MAC Consortium ARCS Endowment (8th)



Josh graduated Phi Beta Kappa from Rice University with a bachelor's degree in Mechanical Engineering. During his undergraduate studies, Josh spent several semesters at NASA JSC, working on flight software and spacecraft control schemes. During this time, he fell in love with the field of GN&C and became interested in how advancements in control schemes could facilitate cheaper and more advanced operations in space. He is most excited about the potential for activities in space to increase our understanding of phenomena both across the galaxy and on our own planet, including climate change, and hopes to leverage expertise gained at UW to impact these areas. In his free time, Josh loves to hike, play strategy games, and hang out with friends.

Julisa Juarez – *Chemistry*
University of Washington

Mark A. Jones ARCS Endowment (5th)



Julisa received a bachelor's degree in Chemistry with a focus on environmental sustainability from Bennington College. Born 10 minutes from the Mexican American border, and raised by a community of immigrants, Julisa learned first-hand how much the climate crisis has fueled the current refugee crisis. The need for ubiquitous, accessible energy fuels her motivation to contribute to applicable solutions like the development of photovoltaics and other optoelectronics. Following her Research Education for Undergraduates (REU) with the Ginger Lab, she hopes to continue research on understanding and applying the focused tools of physical and analytical chemistry towards next generation optoelectronics. At UW, Julisa plans to work inside and outside of the lab setting to further practice communicating science at many levels, and to make her own role in the sciences more accessible. In her free time, she enjoys karaoke, spending time with her cats, going on adventures with friends, and identifying bird calls in her environment.

J Harris Kahn – *Quantitative Ecology & Resource Management*
University of Washington

Winifred & Peter Hussey (4th)



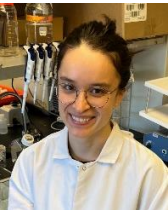
J received their bachelor's degree from Harvey Mudd College in Mathematical and Computational Biology. J has always loved, both sitting at the desk solving math problems, and being out in nature. After a summer job on a trails crew, J realized they wanted to pursue natural resources work professionally. J is entering the Quantitative Ecology and Resource Management (QERM) program at UW to apply quantitative and computational methods to better understand human-environment interactions. Their research aims to identify interventions that can promote more healthful and sustainable systems. In their free time, J can most often be found researching and cooking elaborate meals, attending community events, and making yarncrafts.

Iris Kern – *Oceanography*
University of Washington
Oceanus ARCS Endowment (8th)



Iris received a bachelor's degree from the University of California, Santa Barbara in Aquatic Biology. She is interested in studying how microorganisms influence larger processes in oceans, and how their metabolisms change considering different environmental conditions. Iris has done research in the Santa Barbara Channel studying how microbes consume hydrocarbons present in natural oil and is excited to have the opportunity to begin her research at UW and dive deeper into the world of chemical oceanography. In her free time, Iris enjoys baking, hiking, and diving.

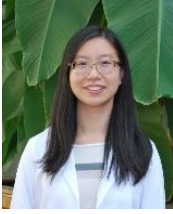
Caroline Kikawa – *MD/PhD - Genome Sciences*
University of Washington
Kathleen & Richard Gary (2nd)



Caroline received a bachelor's degree in Cellular and Molecular Biology from Barnard College, Columbia University. She studies viruses and their interaction with the various compartments of the immune system. Currently, she works in the labs of Leslie Goo, PhD, MPH, and Jesse Bloom, PhD at the Fred Hutch Cancer Center where she studies tropical, mosquito-transmitted viruses including dengue virus and Zika virus. She cares deeply about the impacts of infectious disease on human health and is motivated to increase our understanding of how disease develops and shapes immunity. After completing her MD/PhD, she plans to continue medical training, eventually running her own lab while practicing in the clinic as a physician-scientist. In her spare time, Caroline likes to hug her dog, play cards, find new books to read, and climb rocks.

**Lucy Zhao Li – MD/PhD - Molecular & Cellular Biology
University of Washington**

Keith & Mary Kay McCaw Family Foundation ARCS Endowment (17th)



Lucy graduated from University of Pennsylvania in 2017 with a bachelor's degree in Biochemistry and a master's degree in Chemistry. At Penn, Lucy worked on genetically engineering immune cells to specifically target cancer or B-cell mediated diseases. During this time, Lucy discovered her passion for immunology and curiosity for autoimmune diseases. In 2020, Lucy started the Medical Scientist Training Program at UW to pursue her MD/PhD. Lucy is working in Dr. Jessica Hamerman's lab at the Benaroya Research Institute. She focuses on understanding mechanisms of systemic lupus erythematosus pathogenesis in the hopes of discovering novel therapeutics. Ultimately, Lucy wants to practice as a pediatric rheumatologist while researching autoimmune diseases in her own academic lab. In her free time, Lucy enjoys cooking, playing tennis, and watching tennis and basketball.

**Kaitlynn Lilly – Applied Mathematics
University of Washington**

Becky & Jack Benaroya ARCS Endowment (17th)



Kaitlynn received bachelor's degrees in both Mathematics and Physics from the University of Maryland, Baltimore County. She has a passion for learning and a desire to pursue interdisciplinary work, which motivated her to study applied mathematics in graduate school. Kaitlynn looks forward to studying partial differential equations at UW. She has done work using partial differential equations to understand aerodynamic flow around bridges, vegetation pattern formation, and much more. These research experiences gave her the opportunity to understand the world via mathematics. Kaitlynn enjoys spending time with friends and family, playing basketball, and hiking.

Yilda Macias – Epidemiology

University of Washington

ARCS Seattle Chapter in honor of Jeff Eby



Yilda received bachelor's degrees in Chemistry and Genetics and Genomics from University of Texas - Austin and a Masters of Public Health from New Mexico State University. Growing up in a border town, she saw how cancer affected her community. Her observations and family history motivated her to pursue science and public health degrees. She is interested in cancer and genetic epidemiology research and its role in improving prevention efforts and health outcomes in vulnerable populations. At UW, Yilda looks to refine her research interests and prepare herself for real-world demands as a cancer epidemiologist. She hopes to one day lead a research group that focuses on cancer etiology, risk factors, and survivorship of populations along the U.S.-Mexico border. In her free time, Yilda enjoys reading, painting, cooking, and spending time with her dog, Dexter.

Paul Martinez – Crop and Soil Sciences

Washington State University

Ronald and Darlene Howell ARCS Endowment, WSU (1st)



Paul earned a bachelor's degree in Sustainable Agriculture and Food Systems and a master's degree in Horticulture and Agronomy from UC Davis. He is originally from California but was raised in Mexico. He spent many of his childhood summers in his mother's hometown where farming is the main source of income for many people, including his family. And this is how Paul became interested in studying sustainable agriculture. His interdisciplinary research interest is to understand soil management practices and how they affect soil properties and nutrient availability for crop production. Paul said these can be complicated, but he believes they can provide a holistic point of view to better inform farmers and allow them to make well-informed decisions. In his free time, Paul enjoys playing sports, playing the electric guitar, and biking.

**Haley Masterson – *Veterinary Microbiology and Pathology*
*Washington State University***

Jim & Trish Rogers ARCS Endowment (7th)



Hayley Masterson earned her doctorate in veterinary medicine and bachelor's degree in Microbiology at WSU, along with a minor in Spanish, and has worked in Dr. Massaro Ueti's research laboratory for over four years (Fun fact: they met while playing intramural soccer and have been playing on the same teams for five years). She is interested in vector-borne disease and has focused her research on tick-transmitted diseases, such as bovine babesiosis in cattle and anaplasmosis in goats. Through her work with Dr. Ueti, Hayley has completed several research projects, including one that involved traveling and collaborating with other researchers in Mexico. Her ultimate goal is to build a career that allows her to combine her veterinary education with her passion for research and diagnostic lab work. She wants to apply the clinical thinking she has learned (while obtaining her degree) to a diagnostic problem and use laboratory techniques to find a solution. Her interests include traveling to different countries and hiking mountains in the Pacific Northwest (she hiked the second tallest mountain in Ireland, Mt. Brandon), playing soccer, biking, and the outdoors.

**Shirley Mathur – *Statistics*
*University of Washington***

William & Ruth Gerberding ARCS Endowment (12th)



Shirley received a bachelor's degree in Statistical Science from Duke University. Her interest in statistics began when she learned about applied statistical work in the social sciences. Recently, her interests have expanded to encompass more methodological work in statistics. Shirley's current research is focused on developing methods to generate synthetic data from complex survey data so that the synthetic data can be released for public-use analyses and thus protect the privacy of the original survey respondents. In the future, she hopes to stay in academia and continue working on developing statistical methodology that is motivated by applications and research questions from the social sciences. In her free time, Shirley enjoys hiking, biking, and working on improving her cooking skills by trying out new recipes.

Jenna McHale – *Nursing Science*

University of Washington

Pamela H. & Donald W. Mitchell & ARCS Endowment in Nursing Science, Second (6th)



Jenna received a Master of Nursing Science (Nursing Education) from Chatham University and a BFA from the University of California, Irvine. In her professional experience as an emergency nurse, Jenna has worked in nationally recognized trauma and stroke centers. As a Professional Development Specialist RN, Jenna

utilized her fine arts background to provide non-traditional, learner-focused, educational approaches for nursing staff. At UW, her research will focus on how emerging technologies (AR/VR/Serious Gaming) increase learner success compared to traditional didactic methods. She looks forward to exploring how employing innovative technologies in an open-access format can improve education access and health outcomes on a global scale. Jenna enjoys hiking with her dog, cooking (as well as eating), and traveling around the world in her free time.

Patrick Monreal – *Oceanography*

University of Washington

Fairway Fund ARCS Endowment (8th)



Patrick received a bachelor's degree with honors in Earth Systems (Oceans, Climate, & Atmosphere) and a minor in Chemistry at Stanford University. He has a wide range of research and field experience in biogeochemistry, including mercury uptake in terrestrial soils, nitrous oxide cycling in marine oxygen-deficient zones, and, most

recently, iron stabilization at hydrothermal vents. Patrick is interested in continuing research in chemical oceanography to study how marine chemistry influences climate and vice versa. At UW, he will pursue a PhD in Oceanography, quantifying iron and organic iron-binding molecules in unique marine environments like hydrothermal vents or even macrofauna excrement (whale poop!). Iron is an essential micronutrient for microbial life, so its availability has implications both for ocean health and the ability of the ocean to uptake atmospheric carbon via the biological pump. Outside of research, Patrick loves hiking and DJing at his local community radio station.

Raul Moreno – Atmospheric Sciences

University of Washington

Nancy Mee & Dennis Evans (4th)

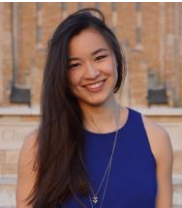


Raul received a bachelor's degree in Atmospheric Science from Indiana University Bloomington. He has had a variety of earth systems research experiences including participation in a State Department led Diplomacy Lab (with a project focus on volcanism), an atmospheric science REU, and an undergraduate research project on geoengineering. Raul's research interests include large scale atmospheric dynamics, machine learning weather forecasting, and cloud microphysics. He hopes a graduate education will equip him with the tools to more independently ask and answer questions about the world we live in. He is excited to continue his education in atmospheric science at UW under the mentorship of Dr. Dale Durran and hopes his work will produce useful tools for understanding weather patterns. In his free time, Raul enjoys exploring the outdoors, sewing, and cooking.

Monika Perez – Genome Sciences

University of Washington

Washington Research Foundation (130th)



Monika received a bachelor's degree in Chemical Engineering and a minor in Biology from the University of Tulsa. Her love of problem-solving and passion for human health research guided her to computational biology. Her research experiences focus on characterizing gene networks and identifying vulnerabilities in leukemia. In the future, she plans to integrate multi-omics datasets to predict new drug targets and identify clinically relevant biomarkers expediting the era of personalized medicine. As an international and interracial adoptee, she is passionate about advocating for future scientists with diverse backgrounds and she plans to contribute to the scientific community by mentoring other disadvantaged students throughout her career. Monika enjoys bouldering, baking, going to music festivals, and playing frisbee with her dog, Bubba.

**Nick Petty – MD/PhD - Molecular & Cellular Biology
University of Washington**

Oliver W. Press ARCS Endowment (2nd)



Nick received a bachelor's degree in Chemistry with a minor in Biology from Swarthmore College with High Honors. He then further refined his career interests through his work at the University of Pennsylvania, where he helped in the development of novel immunotherapies such as chimeric antigen receptor macrophages. This interest in gene therapies drives Nick's interests as he continues his studies at UW. Now a member of the Kiem lab at the Fred Hutchinson Cancer Center, Nick hopes to continue working to develop new therapeutics using genetic engineering towards a diverse array of disorders including sickle cell disease, Fanconi anemia, and neurodegenerative disorders. He will ultimately aim to carry these therapies from the laboratory into the clinic, where they can be used to help patients. Outside of the lab, Nick enjoys hiking, board games, and exploring Seattle's coffee scene.

**Vyom Raval – MD/PhD - Neuroscience
University of Washington**

Keith & Mary Kay McCaw Family Foundation ARCS Endowment (18th)



Vyom received a bachelor's degree in Neuroscience from the University of Texas at Dallas. He is grateful to all his mentors at UTD, including Dr. Julie Schneider, Dr. Mandy Maguire, Cedric Ambulo, and Dr. Taylor Ware, as well as mentors at UTSW Kevin P. Nguyen, Dr. Albert Montillo, and Dr. Richard Dewey, for guiding him in his research journey in neuroscience and engineering. His work in neuroimaging and machine learning led him to his current interest in computational neuroscience, where he aims to use computational tools and experimental techniques to uncover mechanisms of neural function and dysfunction. Vyom aspires to pursue clinical practice focused on global health and translational research. He enjoys discussing philosophy with young folks through the Philosophy For Children program, reading anti-colonial works, and watching films with family.

Larissa Jean Etta Robinson-Cooper – *Neuroscience*

University of Washington

Kitti & Bill Lile (3rd)



Larissa received a bachelor's degree in Neuroscience from the University of Michigan. After graduating, she worked in Dr. Lori Isom's lab studying novel variants in ion channel genes that lead to a form of pediatric epilepsy called Dravet Syndrome. During her time as a graduate student at UW, Larissa hopes to study circadian biology with emphasis on the relationship between sleep and epilepsy or mood disorders. She's also looking forward to getting teaching experience while earning her PhD. In the future, she hopes to become a tenure track professor and mentor students from underrepresented backgrounds. In her free time, Larissa enjoys sewing, hiking, reading, and trying new foods.

Kellen Rodriguez – *Computer Science & Engineering*

University of Washington

John W. & Elaine N. Zevenbergen ARCS Endowment (34th)



Kellen received a bachelor's degree from the California Institute of Technology in Computer Science and Business, Economics, and Management with a minor in Astrophysics. He has always had a deep curiosity and passion for learning. He is currently excited about research in the interdisciplinary fields of molecular programming and DNA nanotechnology which require many creative solutions. Kellen enjoys running, growing trees, and raising reptiles.

Joelle Scott – *Chemical Engineering*

University of Washington

Luciana Simoncini & Todd Scheuer (2nd)



Joelle received a bachelor's degree in Chemical Engineering from Case Western Reserve University. Her past research has included projects on membrane separations, fuel cells, and renewable energy. She has always been passionate about the environment and aims to focus her research on energy and sustainability. She hopes to make an impact in climate change research and increase representation of women in the area. Joelle plans to pursue a career in high-level research, either in industry or a national lab. In her free time, Joelle enjoys traveling, going to concerts, running, and thrifting.

J. S. Silviria – *Earth & Space Sciences*

University of Washington

Mary Dunnam (6th)



J received their bachelor's degree in Earth Science (Geology option) from the New Mexico Institute of Mining & Technology (NMT) in 2017, and their master's degree in Earth & Planetary Science from the University of New Mexico Albuquerque in 2019. J has been fascinated with the natural world, particularly prehistoric life, since early in their childhood, and hopes to apply their knowledge of mammal evolution and bioinformatics to collection curation and database management for museums and science centers. They are currently in the Wilson Lab, focusing on the dental and postcranial morphometry of early placental mammals across the Cretaceous-Paleogene boundary. J spends much of their free time hiking, writing, and collecting anime memorabilia and rare natural history books.

Chad Small – Atmospheric Sciences

University of Washington

Micki E. & Robert J. Flowers ARCS Endowment (9th)



Chad received his bachelor's degree in Environmental Engineering from Yale University, and his master's degree in Earth and Atmospheric Sciences from the City College of New York. He is interested in exploring how climate change might intensify extreme precipitation events in different regions of the United States, and the world. His interests in this space developed as he witnessed how severe storm events continue to have pronounced effects on marginalized communities. Chad is looking forward to learning more about the nuances of extreme precipitation research, and how that research can be disseminated to non-technical audiences. Ultimately, he hopes to build out an academic career that advances novel research which is still accessible to the public. In his down time, Chad enjoys martial arts and overthinking about music.

Meg Southard – Neuroscience

Washington State University

Washington Research Foundation (128th)



Meg Southard is originally from upstate New York, and she has lived most of her life in Indiana. She earned bachelor's degrees in both Neuroscience and Spanish from Indiana University. Following graduation, Meg worked as a lab technician, researching novel binding sites on the ErbB4 receptor. During this time, she also worked as a teaching assistant for a molecular neuroscience lab course at Indiana University and realized she really enjoyed teaching, especially in a hands-on lab setting. While her background is in the molecular neuroscience of receptor tyrosine protein kinases, Meg has also always been interested in studying drugs of abuse and how they affect the brain's reward circuitry. So, this is the research, she plans to pursue as a PhD student at WSU! She likes to hike, ski, and read in her free time. She loves animals and has a pet cat and gecko. Meg is also a self-proclaimed *Star Wars* nerd.

Ella Spurlock – Chemistry

University of Washington

Nicole A. Board ARCS Endowment (5th)



Ella earned an honors bachelor's degree in Chemistry from the University of Utah with emphases in both materials science and biology. Her interest in chemistry began at a young age with an At-Home Science Experiments for Kids book. As a college Junior, Ella found her niche in chemistry in a materials science course called Electronic Properties of Solids. Now Ella's research interests involve discovering, synthesizing, and characterizing novel electronic and magnetically active materials. She hopes to continue in this area of research and ultimately become a professor of chemistry, so she can share her love for science with students while also running a research lab. Outside of academia, Ella trains on aerial dance apparatuses, plays Dungeons & Dragons, and spends time in the great outdoors with her friends and partner.

Aymee Dale Steidl – Nursing Science

University of Washington

Pamela H. & Donald W. Mitchell ARCS Endowment in Nursing Science (7th)



Aymee received a master's degree in Nursing from Johns Hopkins University and a master's degree in Anthropology from Colorado State University. In her professional career she has explored research and teaching in both anthropology and nursing, as well as practiced clinically as a pediatric RN. Through these experiences she has fallen in love with pediatric nursing. Aymee aims to improve pediatric health outcomes through her PhD research at UW, where she will explore cultural understandings of illness representation within the pediatric population. She strives to include culture as a social determinant of health and wants to expand on the understanding that culture impacts pediatric illness. She is passionate about bridging the gap between anthropology and nursing in the health care setting and is a member of the Counsel on Nursing and Anthropology (CONAA). In her free time, Aymee loves being outdoors and adventuring with her family.

Natalie Sturm – Crop & Soil Sciences

Washington State University

Washington Research Foundation (129th)



Natalie Sturm grew up in suburban Chicago with no real ties to agriculture but a passion for the environment. At age 13, after taking a class that discussed the linkages between environmental quality and human nutrition to farming, she knew she had found her calling. She wanted to farm and help others farm in a way that improved the environment, human health, and farmers' livelihoods. Natalie became involved in as many aspects of agriculture she could - from 4-H to working on farms to conducting agricultural research as an undergraduate at Montana State University where she earned a bachelor's degree in Agroecology. During her master's program in Plant and Soil Science at South Dakota State University, she channeled her passion into a goal to solve agronomic and environmental issues through research and promoting effective farm-management practices. When Natalie's not farming or researching, she enjoys gardening, board games, skiing, and hiking.

Kirsten Thompson – MD/PhD - Molecular & Cellular Biology

University of Washington

Washington Research Foundation ARCS Endowment (132nd)



Kirsten received a bachelor's degree in Bioengineering and master's degree in Biology from Stanford University. She is currently a trainee in the University of Washington dual MD/PhD program, where she is pursuing a graduate degree in Molecular and Cellular Biology with a focus in cancer immunology and drug design. For her graduate research, she is interested in using de novo computational protein design as a tool to probe immune cell signaling and improve targeting and activation of Chimeric Antigen Receptor (CAR) T-cell therapies for various cancers. Ultimately, Kirsten aims to pursue a career in academic medicine, both as a practicing pediatric oncologist and as a principal investigator of a translational research laboratory. Outside of her research, Kirsten is passionate about K-college STEM education and outreach, volunteering in community health clinics, playing the string bass, hiking, and kayaking.

Robert Trujillo – *Biostatistics*

University of Washington

Ronald & Darlene Howell ARCS Endowment, UW (1st)



Robert received a bachelor's degree from California State University Channel Islands, where he double majored in Computer Science and Mathematics, with a concentration in Statistics. At Channel Islands, Robert had the opportunity to work closely with faculty in a variety of research areas, from an

observational study of educational outcomes to using machine learning in drug development, the latter of which involved industry collaboration with Amgen. Robert is excited to be attending UW to pursue a doctorate in Biostatistics, where he hopes to leverage his statistical training and programming experience into impactful interdisciplinary research that can benefit others at scale. Robert aspires to become a professor of Biostatistics and serve as a role model and ally to other underrepresented students. He enjoys road trips, classical guitar, and hiking.

Marita White – *Molecular Plant Sciences*

Washington State University

ARCS Seattle Chapter



Marita White was born and raised in St. Paul, Minnesota, where she also earned bachelor's degrees in Biology and Biochemistry from Bethel University. At WSU, she will conduct research on club wheat to improve its aluminum tolerance, as well as investigate the role of soil

microorganisms in aluminum tolerance in wheat. Her personal interests, apart from plants, include dragonflies, fishing, playing violin, being outdoors, and reading. Fun fact: Marita shares a birthday with her older sister, even though they are not twins.

Lauren Wilner – *Epidemiology*

University of Washington

**Charles & Delphine Stevens Family Foundation ARCS Endowment
(2nd)**



Lauren received a bachelor's degree in International Relations and Community Health and a master's degree of Public Health in Epidemiology and Biostatistics from Tufts University. She has worked in a variety of research settings, ranging from evaluating cost-effectiveness and effectiveness of global nutrition programs to statistical modeling of global birth defects. As a fellow with the Centers for Disease Control, she also spent time designing and implementing programs and coursework to train epidemiologists in West Africa. Lauren's research interests include using novel methods including machine learning and causal inference to answer public health questions, particularly those related to the pregnancy outcomes, the built environment, and nutrition. She is passionate about using data to drive decision-making that optimizes health and minimizes disability. In her free time, Lauren loves hiking, skiing, and kayaking with her dog.

Naomi Yamamoto – *MD/PhD - Molecular & Cellular Biology*

University of Washington

Julie Tall ARCS Endowment (7th)



Naomi graduated from the University of Chicago with a bachelor's degree in Chemistry in 2019. She is currently in the Medical Scientist Training Program at the UW, earning her MD/PhD. Naomi's research focuses on cancer biology, specifically understanding the molecular events that make some cancers more aggressive than others. She hopes to identify new therapeutic targets to improve current treatment and further our understanding of the fundamental biology underlying cancer initiation and metastasis. Naomi works in Sita Kugel's lab at the Fred Hutchinson Cancer Center, focusing on pancreatic cancer. She hopes to eventually practice as a medical oncologist and head her own research lab. In her free time, Naomi enjoys reading, fencing, and baking.

**Jina Yoon – Computer Science & Engineering
University of Washington
Margaret Breen & Stewart Landefeld (4th)**



Jina graduated from Brown University in 2018 with dual degrees in Computer Science and Modern Culture & Media. She grew up gaming her entire life and is inspired to create systems that encourage people to be nicer to each other on the internet. Especially in an era where information is so widely available online, she believes

that researching and designing social systems with empathy and equity is key to reducing issues like polarization, toxicity, and misinformation. Jina loves teaching, mentoring, and learning, and is excited to continue her studies at UW after three years of working at Microsoft and Riot Games. In the past, she has published papers on online community moderation and personal health tracking. She aims to be a lifelong learner by continuing in academia after graduate school and becoming a research professor. Jina loves playing video games, reading psychology books, listening to music, and going to the gym.

SECOND YEAR SCHOLARS

**Nicole Aikin – UW *Earth & Space Sciences*
Terry David Keegan Memorial (3rd)**

**Kaylee Andrews – WSU *Veterinary Microbiology & Pathology*
Lynn & Mikal Thomsen (18th)**

**Kaylie Barton – WSU *School of Molecular Biosciences*
Loch Anderson Allyn Perkins (6th)**

**Sophie Blackburn – UW *MD/PhD - Bioengineering*
Washington Research Foundation (123rd)**

**Kimberly Brinker – UW *Nursing Science*
Bobbie & Richard Berkowitz ARCS Endowment in Nursing Science**

**Lauren Brown – UW *Chemistry*
Virginia M. Dickenson Memorial ARCS Endowment (8th)**

**Samuel Buckner – UW *Aeronautics & Astronautics*
MAC Consortium ARCS Endowment (7th)**

**Kristen Bullough – WSU *Plant Pathology*
Aven Foundation (6th)**

**Ellie Byrnes – UW *Applied Mathematics*
Diane and Kirby McDonald**

**Nathan Cheung – UW *Mathematics*
Dorothy Lewis Simpson ARCS Endowment (18th)**

**Tracy Chin – UW *Mathematics*
Althea Stroum ARCS Endowment (33rd)**

**Christopher Cote – WSU *Molecular Plant Sciences*
WSU Graduate School**

**Ron Dickerson – UW *Health Economics & Outcomes Research*
ARCS Seattle Chapter in Honor of Cindy & Stan Freimuth**

**Evan Domsic – WSU *Crop and Soil Sciences*
Lyndi & Bob Taylor (3rd) with ARCS Foundation**

**Laurel Doyle – UW *Applied Mathematics*
Chisholm Foundation Second ARCS Endowment (14th)**

**Steven Edmonds – WSU *Veterinary Microbiology and Pathology*
Catherine Mee (5th)**

**Neljon Emlaw – UW *Atmospheric Sciences*
Alden Garrett and Charles Eriksen**

**Zac Espinosa – UW *Atmospheric Sciences*
Sally & John Morbeck (2nd) with Erin Moyer & Jason Barber**

**Sydney Floryanzia – UW *Chemical Engineering*
Washington Research Foundation (124th)**

**Alexander Galarraga – UW *Mathematics*
ARCS Foundation Seattle Chapter**

**Sam Garza – UW *Astronomy*
Nancy P. & Douglas E. Norberg ARCS Endowment (5th)**

**Kelly Heard – UW *Molecular & Cellular Biology*
Keith & Mary Kay McCaw Family Foundation ARCS Endowment (16th)**

**Liban Hussein – UW *Electrical & Computer Engineering*
Susan & William Potts ARCS Endowment (4th)**

**Daniel Jiang – UW *Computer Science & Engineering*
Walker Family ARCS Endowment (12th)**

**Tae Jones – UW *Computer Science & Engineering*
ARCS Light in Honor of Carmen Gayton**

**Laurel Kelnhofer-Millevolte – UW *MD/PhD - Molecular & Cellular Biology*
Susan Jobs with Gail Ransom (2nd)**

**Shane Kosir – WSU *Chemical Engineering*
Washington Research Foundation (126th)**

Aaleyah Lewis – UW *Computer Science & Engineering*
Washington Research Foundation (125th)

Chris Lin – UW *Computer Science & Engineering*
Lisa & Mike Losh ARCS Endowment (7th)

Colin Marquis – UW *Materials Science & Engineering*
PACCAR Inc. (8th)

Kyra McClelland – UW *Biology*
ARCS Seattle in Honor of Mary Kay McCaw

Turtle McCloskey-Potter – UW *Environmental & Forest Sciences*
Camille & Jim Uhlir ARCS Endowment (16th)

Siegen McKellar – UW *MD/PhD - Molecular & Cellular Biology*
Zevenbergen Capital Investments LLC (32nd)

Kirsten Meltesen – UW *Biology*
ARCS Foundation Seattle Chapter

Emily Miura-Stempel – UW *Chemistry*
Andrea Ellison Hess (5th)

Andrew Mullen – UW *MD/PhD - Computer Science & Engineering*
Keith & Mary Kay McCaw Family Foundation ARCS Endowment (14th)

Anna Okounkova – UW *Physics*
Chisholm Foundation ARCS Endowment (13th)

Miguel Paredes – UW *MD/PhD - Epidemiology*
Kerr Family

Kyra Parker – WSU *Neuroscience*
Karen Cameron

James Peng – UW *Biostatistics*
Kristin N. Kenefick & Nancy P. Norberg ARCS Endowment (3rd)

Alyxandria “Danny” Powell – WSU *Veterinary Microbiology & Pathology*
Marcia McGreevy Lewis (4th) with Connie Niva (3rd)

Molly Sayles – WSU *Entomology*
Karyl & Elias Alvord (5th)

Ariel Scott – UW *Pharmaceutics*
Gladys Harrington ARCS Endowment In Honor of Eve Alvord (22nd)

Jordan Shaker – UW *MD/PhD - Neuroscience*
Keith & Mary Kay McCaw Family Foundation ARCS Endowment (15th)

Jeremiah Sims – UW *MD/PhD - Molecular & Cellular Biology*
Rhea & Clark Coler with ARCS Foundation

Camille Wagstaff – WSU *Molecular Plant Sciences*
Floyd Rogers Memorial (2nd)

Terrance Wang – UW *Aquatic & Fishery Sciences*
Polly & Andrew Kenefick with ARCS Foundation

Ashley Warren – WSU *Veterinary Microbiology & Pathology*
Kathleen & Brooks Simpson (4th)

Leigh West – UW *Biology*
**Vicki J. & Thomas W. Griffin in Honor of Paige & Griffin Thoreson
ARCS Endowment (8th)**

Alexandra Willcox – UW *MD/PhD - Molecular & Cellular Biology*
Carlyn & George Steiner ARCS Endowment (11th)

Natalie Yaw – WSU *Chemistry*
Washington Research Foundation (127th)

THIRD YEAR SCHOLARS

**Lara Maria Amiri-Kazaz – WSU Entomology
Washington Research Foundation (121st)**

**Aurora Authemen – UW Pharmaceuticals
Becky & Jack Benaroya ARCS Endowment (16th)**

**Logan Bailey – UW Molecular & Cellular Biology
Allison & Steve Harr (2nd)**

**Kevin Baird – WSU Veterinary Microbiology & Pathology
ARCS Foundation Seattle Chapter**

**James Buenfil – UW Statistics
Rosa Ayer ARCS Endowment (10th)**

**Jerome Butler – UW Medicinal Chemistry
Washington Research Foundation (118th)**

**Naseeha Cardwell – WSU Chemical Engineering
Washington Research Foundation (122nd)**

**Logan Condon – UW Neuroscience
Cori Kirkpatrick (2nd) with Marcia McGreevy Lewis (3rd)**

**Lang Conteh – UW Nursing Science
Joanne & Bruce Montgomery ARCS Endowment (11th)**

**Eden Cruikshank – UW Molecular & Cellular Biology
Keith & Mary Kay McCaw Foundation ARCS Endowment (11th)**

**Irene Cruz Talavera – UW Pathobiology
ARCS Light in honor of Carlyn Steiner**

**Arnav Das – UW Electrical & Computer Engineering
Althea Stroum ARCS Endowment (32nd)**

**Alex DeGrave – UW MD/PhD – Computer Science & Engineering
Chisholm Foundation ARCS Endowment (12th)**

**Caroline Duncombe – UW Pathobiology
Joanne & Bruce Montgomery ARCS Endowment in honor of the
American Lung Association (4th)**

**Jordan Ehrman – UW Chemistry
Jeff & Jana Foushée ARCS Endowment (4th)**

**Leila Elabbady – UW Neuroscience
Camille & Jim Uhlir ARCS Endowment (15th)**

**Marlin Figgins – UW Applied Mathematics
Washington Research Foundation (119th)**

**Sierra Gillman – UW Environmental & Forest Sciences
Debbi & John Wilson (4th) with Jenny & Scott Wyatt (4th)**

**Andres Guerrero-Guzman – UW Mathematics
UW Graduate School (17th)**

**Malika Hale – UW MD/PhD – Molecular & Cellular Biology
Sandra & Kent Carlson (4th) with Luciana Simoncini & Todd Scheuer**

**Anand Hemmady – UW Biostatistics
ARCS Foundation Seattle Chapter**

**Allison Herrick – WSU Animal Science
Cassa Hanon**

**Jodiene Johnson – UW Molecular & Cellular Biology
Nancy & John Zevenbergen ARCS Endowment (31st)**

**Sebastian Krajewski – UW Chemistry
UW Graduate School (18th)**

**Jess Pieraccini Kunke – UW Statistics
ARCS Foundation Seattle Chapter**

**Hope Elizabeth Lackey – WSU Chemistry
Loch Anderson & Allyn Perkins ARCS Endowment (4th)**

**Anish Mahadeo – UW Pharmaceuticals
UW Graduate School (19th)**

**Colin Milo McDowell – WSU Molecular Biosciences
ARCS Foundation Seattle Chapter**

**Nadia McLean – WSU Neuroscience
ARCS Foundation Seattle Chapter**

**Grace Miller – WSU Veterinary Microbiology & Pathology
ARCS Foundation Seattle Chapter**

**Oliver Newsom – UW MD/PhD – Molecular & Cellular Biology
John W. & Elaine A. Zevenbergen, Sr. ARCS Endowment (30th)**

**Jacob Ogden – UW Mathematics
Walker Family ARCS Endowment (11th)**

**Deepa Oja – UW Nursing Science
Doris L. Carnevali ARCS Endowment in Nursing (2nd)**

**Kentrell Owens – UW Computer Science & Engineering
ARCS Seattle in honor of Jan Harrison**

**Janice Marie Parks – WSU Molecular Plant Sciences
Ellen Look & Tony Cavalieri**

**Erica Peterson – UW Speech & Hearing Sciences
Alvords in honor of Bruce & Laura Bailey**

**Lilana Rangel-Parra – UW Environmental & Forest Sciences
Harriett & John Morton (4th)**

**Michael Riehs – UW Chemistry
ARCS Foundation Seattle Chapter**

**Noah Rosenberg – UW Oceanography
Alicia & Jeff Carnevali ARCS Endowment in Oceanography (2nd)**

**Sara Saavedra – UW Neuroscience
Gladys Harrington ARCS Endowment in honor of Eve Alvord (21st)**

**Peter Schmuker – WSU Crop Science
ARCS Foundation Seattle Chapter**

**Cassidy Shamseldin – WSU Molecular Plant Sciences
Loch Anderson & Allyn Perkins ARCS Endowment (5th)**

**Susan Simmonds (Bohorquez) – UW Bioengineering
Washington Research Foundation (120th)**

**Rachelle Stowell – UW Chemistry
Keith & Mary Kay McCaw Family Foundation ARCS Endowment (12th)**

**Katie Kailing Tseng – WSU Global Animal Health
Alicia & Jeff Carnevali in honor of Sophia R. Carnevali ARCS
Endowment (2nd)**

**Antonio Vazquez – UW Chemistry
Nicole A. Boand ARCS Endowment (4th)**

**Jasmine Villegas – UW Bioengineering
Michael & Marti Young Endowment (2nd)**

**Florencia Visconti – UW Biology
ARCS Foundation Seattle Chapter**

**Courtney Vishy – UW MD/PhD – Molecular & Cellular Biology
Zevenbergen Capital Investments LLC (29th)**

**Joe Voth – UW MD/PhD – Neuroscience
Keith & Mary Kay McCaw Family Foundation ARCS Endowment (13th)**

**Cassia Wagner – UW MD/PhD – Genome Sciences
Carlyn & George Steiner ARCS Endowment (10th)**

**Bob Weber – UW Pharmaceuticals
Kathy Fraser (3rd) with Sally & David Wright (3rd)**

**Carey Anne Whitehair – UW Aeronautics & Astronautics
Lindsay F. & Patti Paxton Eberts with ARCS Foundation Seattle**



SESHA HANSON-DRURY

Oral Health Sciences – DDS/PhD, University of Washington
Becky and Jack Benaroya ARCS Endowed Scholar (15th)